



RETAIL BUILDING FOR SALE

411 NW 7 Highway Blue Springs, Missouri



SALE PRICE: \$750,000 | 2,210 SF BUILDING

DEMOGRAPHICS

	1 mile	3 miles	5 miles
Estimated Population	9,820	58,422	91,515
Avg. Household Income	\$84,453	\$114,945	\$118,734

- Freestanding 2,210 SF building on 0.67 acre lot
- High visibility to 7 Highway
- Excellent owner/user opportunity
- Recently renovated
- Possible drive-thru addition



CLICK HERE TO VIEW MORE
LISTING INFORMATION

For More Information Contact:

ZACH ALBRECHT | 816.412.7379 | zalbrecht@blockandco.com

Exclusive Agent

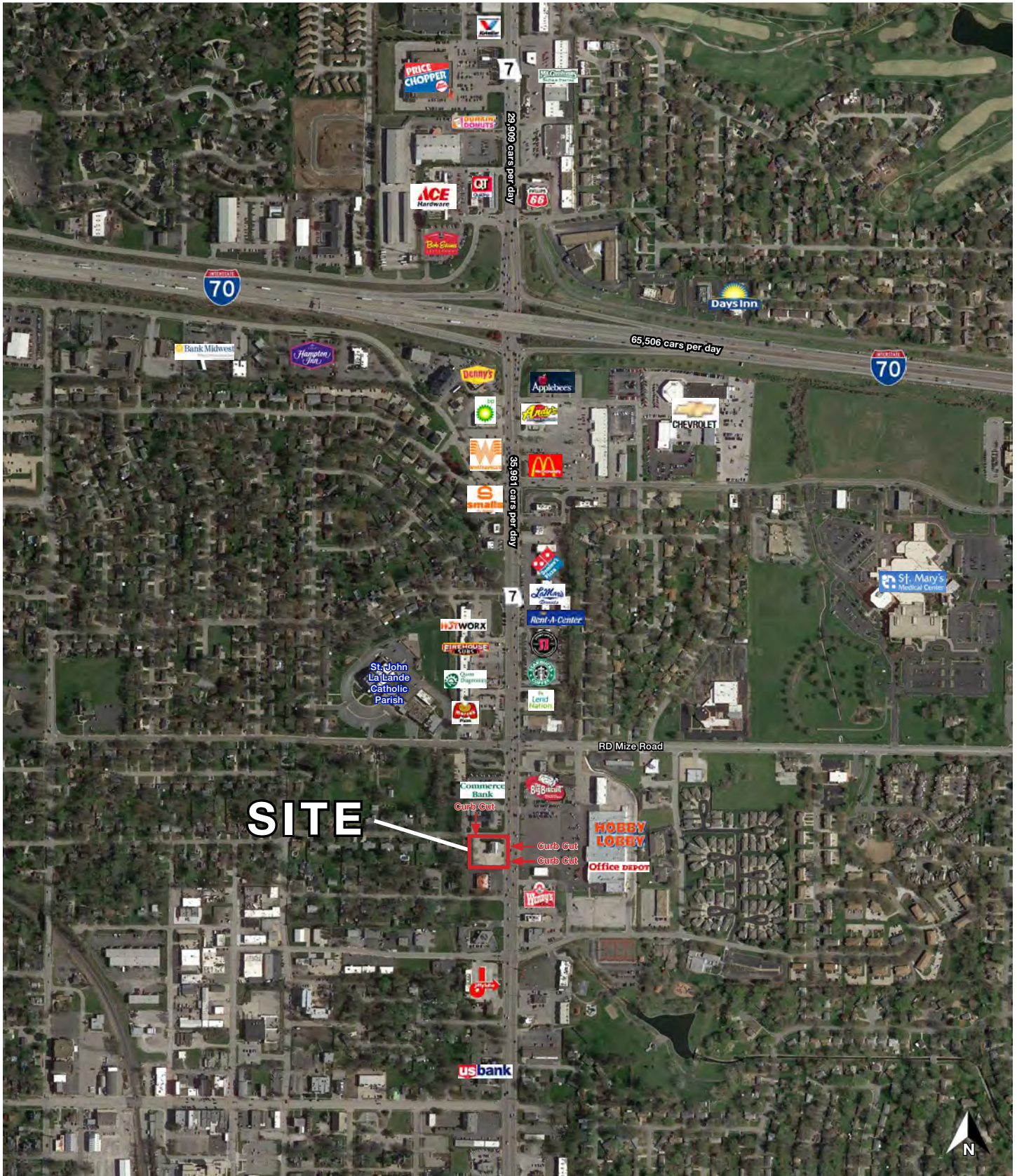
PHOTOS



RETAIL BUILDING FOR SALE

411 NW 7 Highway Blue Springs, Missouri

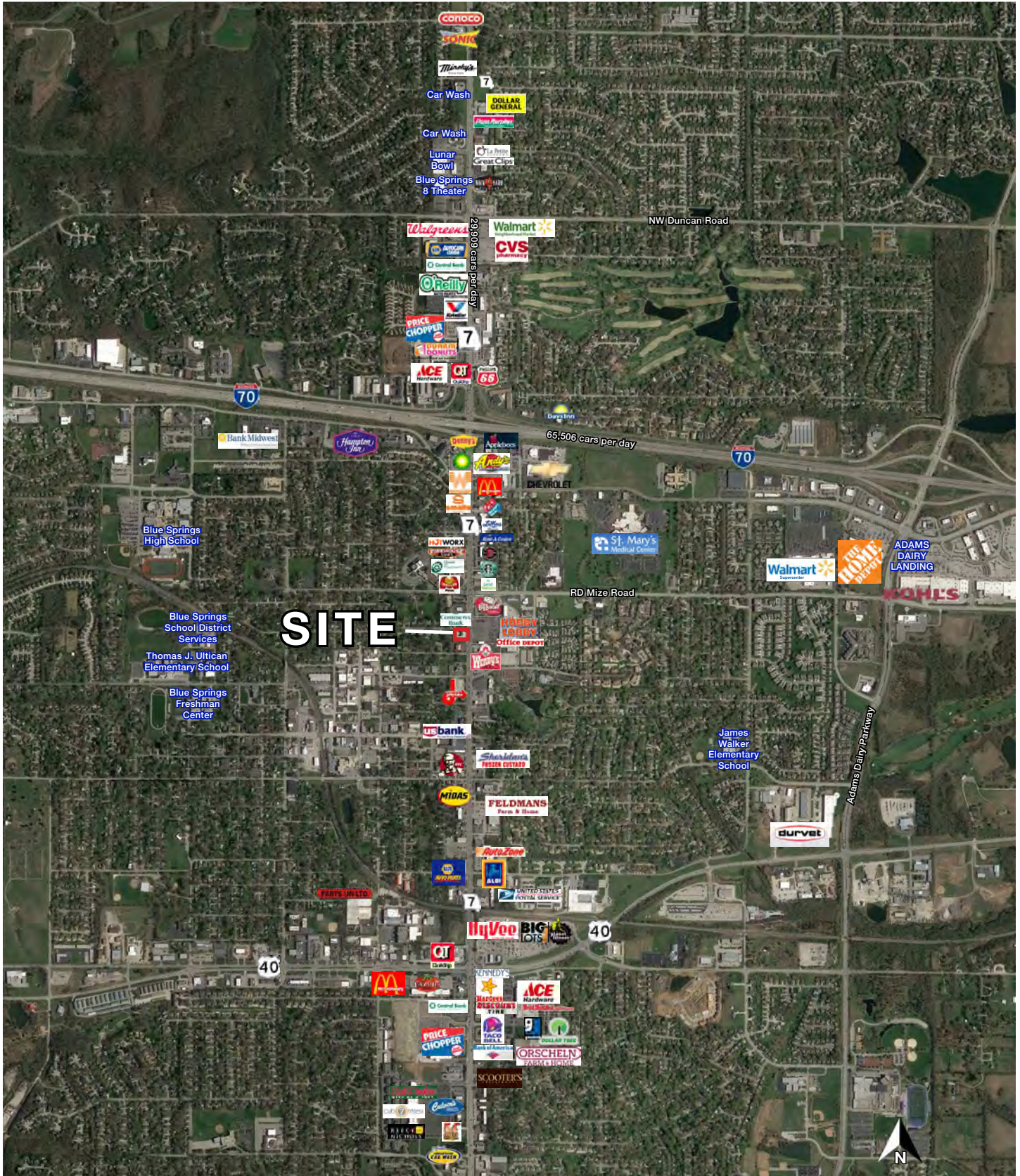
AERIAL



RETAIL BUILDING FOR SALE

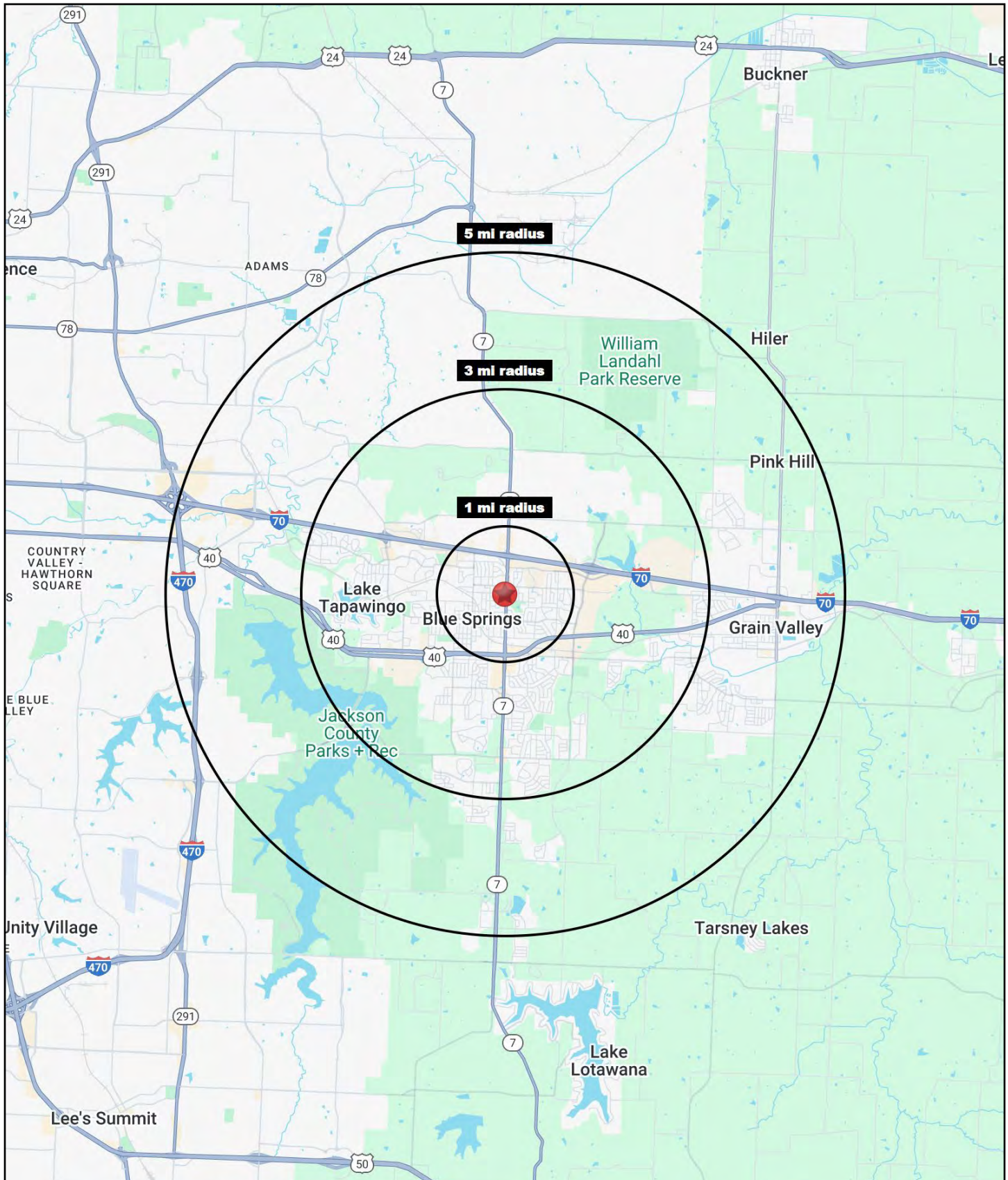
411 NW 7 Highway Blue Springs, Missouri

AERIAL



RETAIL BUILDING FOR SALE

411 NW 7 Highway Blue Springs, Missouri





RETAIL BUILDING FOR SALE

411 NW 7 Highway Blue Springs, Missouri

411 NW 7 Highway Blue Springs, MO 64015	1 mi radius	3 mi radius	5 mi radius
Population			
2024 Estimated Population	9,820	58,422	91,515
2029 Projected Population	10,108	58,867	94,207
2020 Census Population	9,206	60,552	91,356
2010 Census Population	8,860	55,142	79,783
Projected Annual Growth 2024 to 2029	0.6%	0.2%	0.6%
Historical Annual Growth 2010 to 2024	0.8%	0.4%	1.1%
2024 Median Age	38.1	37.3	37.8
Households			
2024 Estimated Households	4,301	22,396	34,981
2029 Projected Households	4,459	22,732	36,153
2020 Census Households	3,879	22,440	34,068
2010 Census Households	3,724	20,500	29,647
Projected Annual Growth 2024 to 2029	0.7%	0.3%	0.7%
Historical Annual Growth 2010 to 2024	1.1%	0.7%	1.3%
Race and Ethnicity			
2024 Estimated White	78.8%	80.3%	81.1%
2024 Estimated Black or African American	10.8%	9.5%	9.0%
2024 Estimated Asian or Pacific Islander	1.6%	1.6%	1.7%
2024 Estimated American Indian or Native Alaskan	0.4%	0.4%	0.3%
2024 Estimated Other Races	8.4%	8.3%	8.0%
2024 Estimated Hispanic	7.7%	7.5%	7.2%
Income			
2024 Estimated Average Household Income	\$84,453	\$114,945	\$118,734
2024 Estimated Median Household Income	\$65,765	\$87,429	\$92,315
2024 Estimated Per Capita Income	\$37,044	\$44,087	\$45,423
Education (Age 25+)			
2024 Estimated Elementary (Grade Level 0 to 8)	1.2%	1.0%	1.2%
2024 Estimated Some High School (Grade Level 9 to 11)	5.0%	3.2%	2.9%
2024 Estimated High School Graduate	30.9%	28.3%	28.5%
2024 Estimated Some College	26.1%	24.4%	23.2%
2024 Estimated Associates Degree Only	7.1%	8.5%	8.3%
2024 Estimated Bachelors Degree Only	18.5%	22.0%	22.7%
2024 Estimated Graduate Degree	11.2%	12.6%	13.1%
Business			
2024 Estimated Total Businesses	683	1,966	3,010
2024 Estimated Total Employees	4,886	14,362	29,802
2024 Estimated Employee Population per Business	7.2	7.3	9.9
2024 Estimated Residential Population per Business	14.4	29.7	30.4

©2025, Sites USA, Chandler, Arizona, 480-491-1112 Demographic Source: Applied Geographic Solutions 11/2024, TIGER Geography - RS1